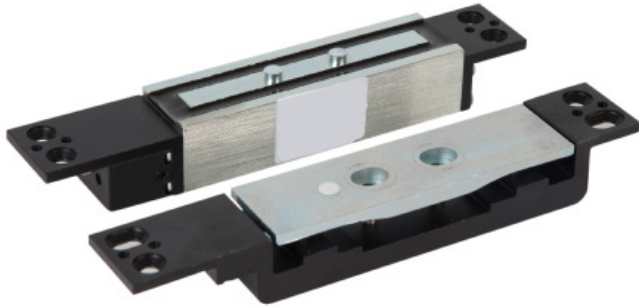




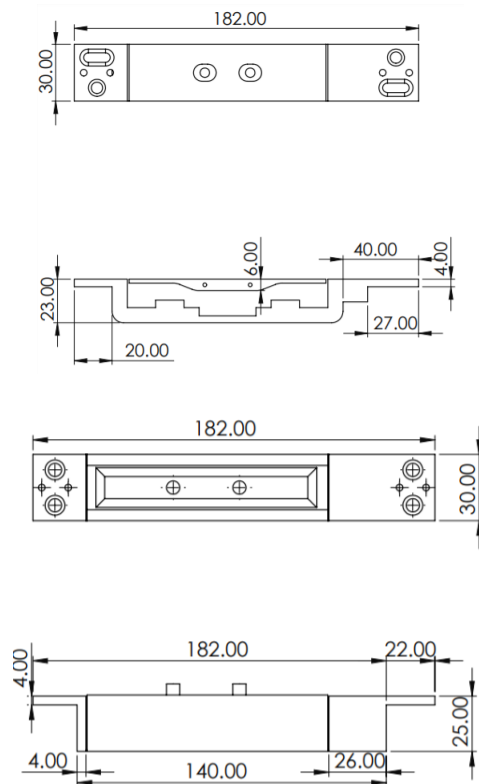
SHEAR LOCK (2600LB)

MAGNETIC LOCK

Market leading green dome button, that is both hard wearing and cost effective. Suitable for use in applications up to 30V.



MSL-2600



SPECIFICATION

MSL-2600

- Door open delay timer (0.5-25 seconds)
- Door position detection outputs
- 12V or 24V DC (auto adjusting)
- Operating current: 900mA @ 12 or 24V DC
- Holding current: 220mA @ 12VDC/190mA @ 24VDC
- Maximum shear force of 1200kg or 2600lb
- Operating temperature: 0-90C
- Monitoring relay: NO and NC contacts (rated 24V/1A)

FEATURES

MSL-2600

- Automatic repeated locking (maximum 60 times)
- Suitable for wooden and aluminium door types
- Made from fireproof materials
- Magnetic distance (max)
 - 3mm @ 12VDC
 - 5mm @ 24VDC
- For horizontal mounting only

Suitable Brackets

- SH2600 (Surface Housing)
- GD2600 (Glass Door Bracket)

OTHER PRODUCTS

SH2600



GD2600



DIMENSIONS

MSL-2600

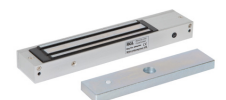
- 182x25x30 (mm)
- 1.2kg (Boxed)
- 582g (Unboxed)

CONTENTS

MSL-2600

- Magnetic Lock Body
- Armature
- Shims
- Screw Pack

ML600



DU-GB/PTE



Manufactured by a BSIA Member