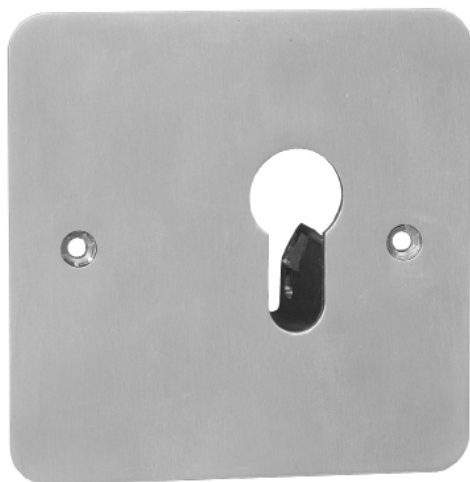




KEY SWITCH - EURO PROFILE

KEY SWITCHES

An expanded range of key switches that complement our market leading range of access control solutions.



KS-EURO

SPECIFICATION	FEATURES	OTHER PRODUCTS
---------------	----------	----------------

- KS-EURO
- Latching changeover contacts
 - Cylinder not supplied
 - Voltage free contacts
 - 12-24VDC
 - No Legend

- KS-EURO
- Functional design
 - Easy to operate
 - Easy clean surface (ideal for hospitals/public areas)
 - Easy cable entry
 - Screw footprint for surface fitting onto surface or flush back box

EBCBWC02/DR



EXTR02



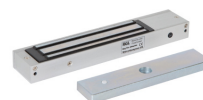
DIMENSIONS	CONTENTS
------------	----------

- KS-EURO
- 85x85x40 (mm) (HxWxD)
 - 210g (Boxed)
 - 200g (Unboxed)

CONTENTS

- KS-EURO
- Key Switch
 - Stainless Steel Plate (2mm)

ML600



DU-GB/PTE



Manufactured by a BSIA Member